

ORANGE COUNTY, VIRGINIA

OFFICE ON YOUTH

ALISHA L. I. VINES
DIRECTOR

avines@orangecountyva.gov
PHONE: (540) 672-5484
FAX: (540) 672-2311



ADDRESS:
146 MADISON ROAD
SUITE 205
ORANGE, VA 22960

To: Orange County Board of Supervisors

From: Alisha Vines, Office on Youth Director *AV*

Through: Bryan David, County Administrator *[Signature]*

Date: May 20, 2014

Subject: CSA Monthly Report – May 2014

Please find attached the CSA report for expenses incurred through March. We continue to show our expenses paid-to-date and projections, based on open cases, to be under our budgeted amount. Our team continues to work hard to ensure our children and families receive the necessary services as well as remaining within our budget.

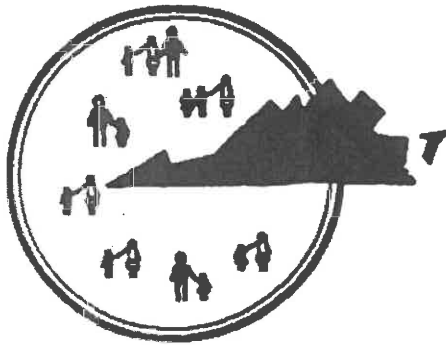
One major concern for our program at this time is the lack of an approved state budget. We have been thinking about a contingency plan in the event this continues past July 1st. I will be asking for guidance from the Office of Comprehensive Services as to what this means for our locality if a budget is not passed. I will keep you posted on our findings.

I have included some information along with my report that shows how youth can be deemed eligible for CSA pool funds. Please read over the information and feel free to reach out to me with any questions you may have. The information gives a broad overview of the services that are commonly purchased and Orange County utilizes many of those same programs for our children. If you would like a more detailed list of our locality specific services, please let me know and I will be happy to provide that information.

Please read over the attached report and let myself or Letitia know if you have any questions and as always, thank you for your continued support.

Cc: Letitia Douthit
File

05/16/14



COMPREHENSIVE SERVICES FOR AT-RISK YOUTH AND FAMILIES
 ORANGE COUNTY COMMUNITY POLICY & MANAGEMENT TEAM
 ORANGE COUNTY FAMILY ASSESSMENT & PLANNING TEAM
 146 Madison Road, Suite 205
 Orange, Virginia 22960
 PH: 540-661-5459
 FAX: 540-672-2311
 E-Mail: ldouthit@orangecountyva.gov

Comprehensive Services Act Program Update Report – May 2014

FY 14 County budget: \$2,302,987.00

Current YTD Expenses as of 04/30/14 (which are July – Mar. Exp.) for the Fiscal year:

| | Expenses | Projections | Total Projected | FY14 Budget |
|------------------------------------|--------------|--------------|-----------------|-------------|
| 43270 Residential Congregate Care | 291,277.72 | \$85,661.14 | \$376,938.86 | 647,659 |
| 43275 FC/CC ED Serv/Sp ED priv day | 422,723.27 | \$273,072.18 | \$695,795.45 | 915,331 |
| 43280 Community Based Serv | 443,307.88 | \$303,926.81 | \$747,234.69 | 686,603 |
| 43285 Sp ED Wrap - CBS | 10,970.50 | \$14,159.25 | \$25,129.75 | 25,267 |
| 43290 Non-Mandated - CBS | 5,304.00 | \$20,996.00 | \$26,300.00 | 28,127 |
| | 1,173,583.37 | \$697,815.38 | \$1,871,398.75 | 2,302,987 |

Thank-you for your continued support! As of 04/30/14, the expenses to date and projections are currently under budget. We will continue to monitor it closely. We will do our best to stay with our budget while providing the much needed services to the At Risk families and Youth of Orange County. In April, we opened 7 new cases. Total Foster Care placements are still slightly up from this time last year and our Residential placements are holding at 3 plus our Parental Agreement RTC placement. Group Home placements are holding at 6. Special Education (IEP) Private Day school placements have increased to 5. In addition, we have a pending adoption.

As of April 30, 2014, we have provided services to 94 At Risk Youth/Families up by 22 compared to 72 Youth/Families at this same time in 2013.

| Service Provided in FY14 compared to FY13: | April 2014 | April 2013 |
|---|------------|------------|
| Total Foster Care funded by CSA | 31 | 30 |
| • Residential FC Placements | 3 | 7 |
| • Group Home FC Placements | 6 | 5 |
| • Treatment FC Placements | 1 | 1 |
| • Independent Living Stipend | 1 | 0 |
| Special Education (IEP) Residential Placement | 0 | 1 |
| Parental Agreement Residential Placement | 1 | 3 |
| Community Based Services | 46 | 31 |
| Special Education Private Day placement (IEP) | 5 | 2 |
| Special Education Community Wrap Services | 3 | 2 |
| Non Mandated | 5 | 3 |
| FAPT only – non-funded | 3 | 7 |

Concerns for FY14:

- The Cap on funding Special Ed Wrap Services
- SEC Denial of Funding Policy

Costs of Services (average):

- Foster Care VEMAT (Additional daily supervision) payment: \$320 - \$2,880
- Intensive Care Coordination: \$750/m
- Parent Mentor Services: \$36/hr
- Mentoring: \$45/hr
- KEYS Program (Counseling Interventions): \$52/hr
- Home Based counseling: \$62/hr
- Therapeutic Day treatment in schools/community: \$108/d
- Therapeutic Behavioral Aide schools/community \$38/hr
- Substance Abuse Treatment (The Hope Program – RRCSB): \$260/13 sessions
- Community based Sex Offender Treatment: \$103/hr

Thank-you

Respectfully Submitted,

Letitia Douthit

Orange County CSA Coordinator

Accessing Services through CSA

The Comprehensive Services Act for At-Risk Youth and Families (CSA) is a law enacted in 1993 that establishes a single state pool of funds to purchase services for at-risk youth and their families. The state funds, combined with matching local funds, are managed by local interagency teams who plan and coordinate services to youth. The mission of the CSA is to create a collaborative system of care that is child-centered, family-focused and community-based when addressing the strengths and needs of troubled and at-risk youth and their families in the Commonwealth.

The Comprehensive Services Act makes a broad array of services available to youth and families through their local community.

CSA funds are available for youth who:

- Require foster care services or foster care prevention services,
- Require placement in private schools to receive special education services, or
- Have behavioral health needs that require coordination of services across multiple agencies or put the youth at risk of out-of-home placement.*

**Use of CSA funds for this population varies by locality*

To access services, families may:

- Request assistance through a public agency serving the family/youth, e.g.,
 - Community Services Board,
 - Department of Social Services,
 - Court Services Unit, or
 - Local school division.
- Contact a local CSA representative. A link to "Local Government Contacts" may be found at the following address: www.csa.virginia.gov.

Commonly purchased services include:

Youth and family support, prevention, & foster care services:

- Mentoring
- Respite
- Community support services
- Emergency shelter
- Intensive care coordination
- Independent living services
- Foster home placement
- Group home placement

Special Education Services (in accordance with an IEP):

- Private Day School
- Private Residential School

Behavioral health services:

- Community-based services:
 - Mental Health Case Management
 - Outpatient Counseling (Individual, Family)
 - Assessment/Evaluation
 - Intensive In-Home Counseling
 - Mental Health Skill Building
 - Therapeutic Day Treatment
 - Treatment Foster Care
 - Crisis Stabilization
- Psychiatric residential treatment services

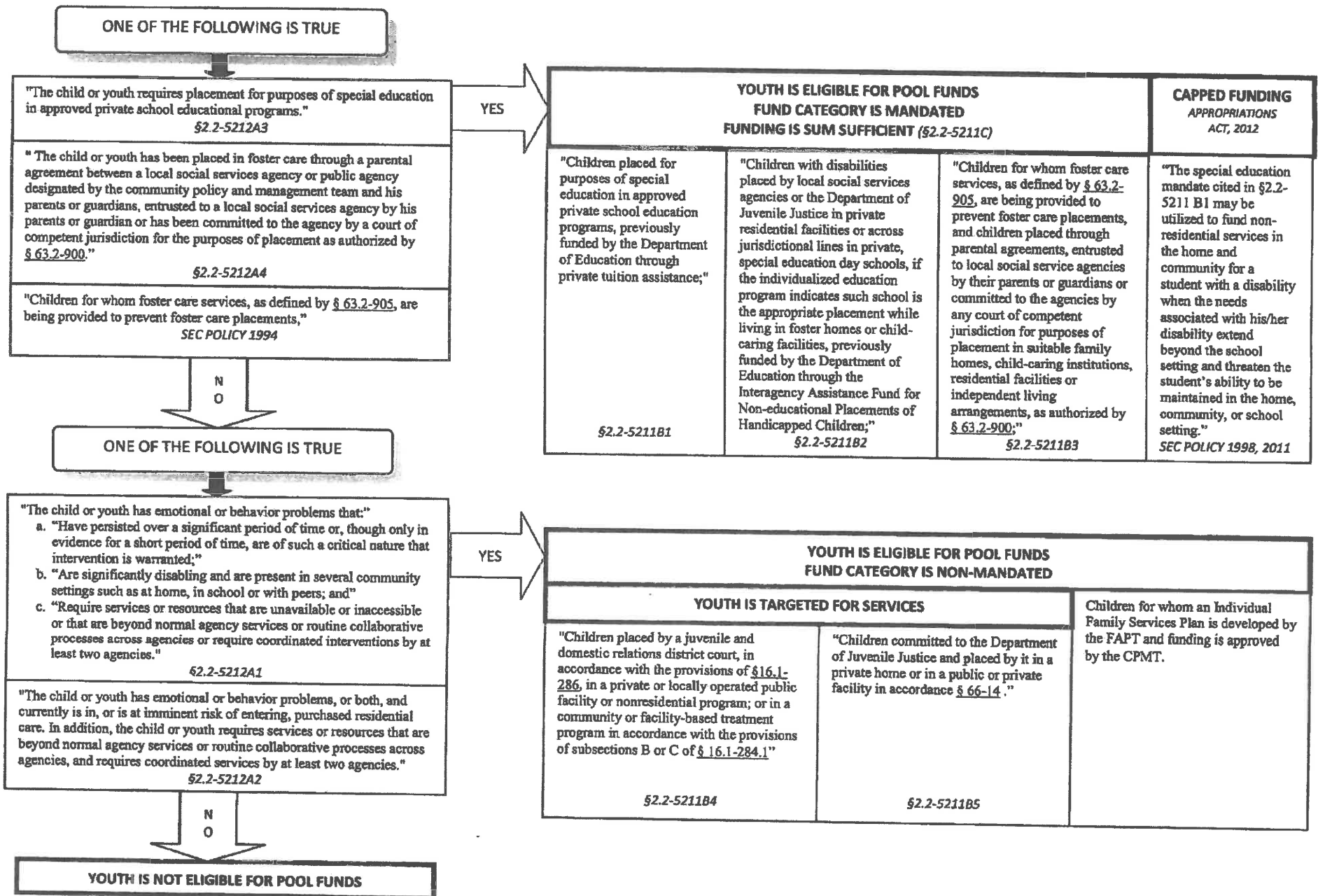
Services are accessed through local community teams who will:

- Determine the youth's eligibility for CSA funding,
- Assess all possible funding options including Medicaid, private insurance, and other community resources,
- In partnership with youth and families:
 - Identify youth and family strengths and needs through a uniform assessment tool,
 - Identify appropriate services designed to achieve desired outcomes,
 - Develop an Individual Family Services Plan to describe services, service providers, goals, and projected timelines for services, and
 - Coordinate, monitor, and adjust services on a regular basis.

Additional Information:

- Some services have specific eligibility criteria.
- Not all services are available in all communities.
- Families may be assessed a co-pay for services.
- Families do not need to relinquish custody to obtain services for a child.

DETERMINING ELIGIBILITY FOR FUNDING UNDER THE COMPREHENSIVE SERVICES ACT



[prev](#) | [next](#)

§ 2.2-5212. Eligibility for state pool of funds.

A. In order to be eligible for funding for services through the state pool of funds, a youth, or family with a child, shall meet one or more of the criteria specified in subdivisions 1 through 4 and shall be determined through the use of a uniform assessment instrument and process and by policies of the community policy and management team to have access to these funds.

1. The child or youth has emotional or behavior problems that:

a. Have persisted over a significant period of time or, though only in evidence for a short period of time, are of such a critical nature that intervention is warranted;

b. Are significantly disabling and are present in several community settings, such as at home, in school or with peers; and

c. Require services or resources that are unavailable or inaccessible, or that are beyond the normal agency services or routine collaborative processes across agencies, or require coordinated interventions by at least two agencies.

2. The child or youth has emotional or behavior problems, or both, and currently is in, or is at imminent risk of entering, purchased residential care. In addition, the child or youth requires services or resources that are beyond normal agency services or routine collaborative processes across agencies, and requires coordinated services by at least two agencies.

3. The child or youth requires placement for purposes of special education in approved private school educational programs.

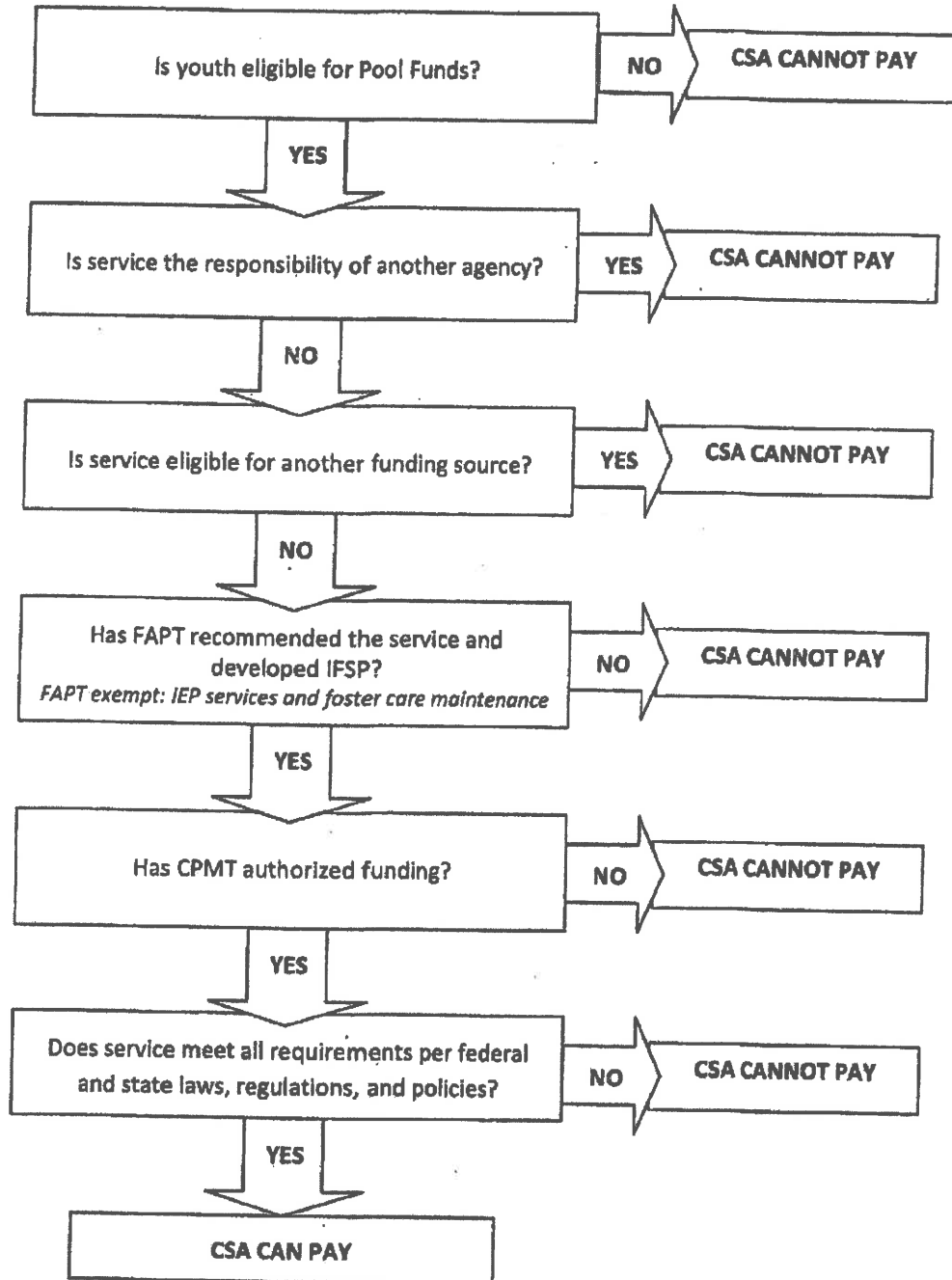
4. The child or youth requires foster care services as defined in § [63.2-905](#).

B. For purposes of determining eligibility for the state pool of funds, "child" or "youth" means (i) a person younger than 18 years of age or (ii) any individual through 21 years of age who is otherwise eligible for mandated services of the participating state agencies including special education and foster care services.

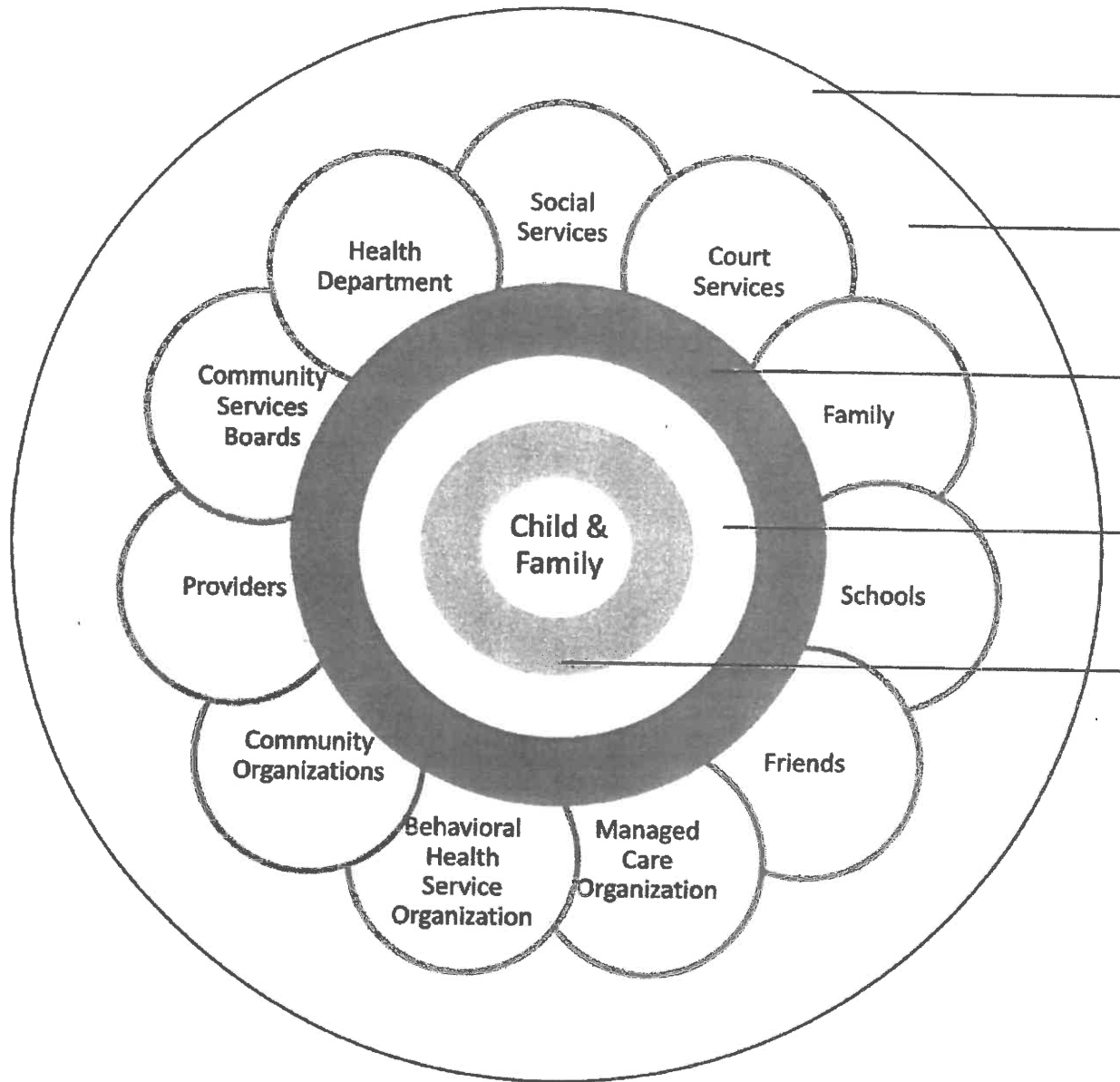
(1992, cc. 837, 880, § 2.1-758; 1994, c. [865](#); 1999, c. [669](#); 2001, c. [844](#); 2013, c. [5](#).)

[prev](#) | [next](#) | [new search](#) | [table of contents](#) | [home](#)

DETERMINING IF CSA CAN PAY



Virginia's Comprehensive System of Care



Shared vision, mission, goals

There is a shared belief that all children deserve access to a coordinated array of critical services which will produce the best possible outcomes.

No wrong door

At-risk youth and families have access to funding and services regardless of how they come to the attention of those responsible for serving them.

Multi-disciplinary planning

There is collaboration and cooperation in planning to address diverse and complex needs without limitations that might otherwise be imposed by operating within the parameters of individual agencies.

Blended & braided funding

Financial structure encourages effective and efficient use of all available resources and maximization of federal funding streams. Access to funds is available in one place and through one mechanism.

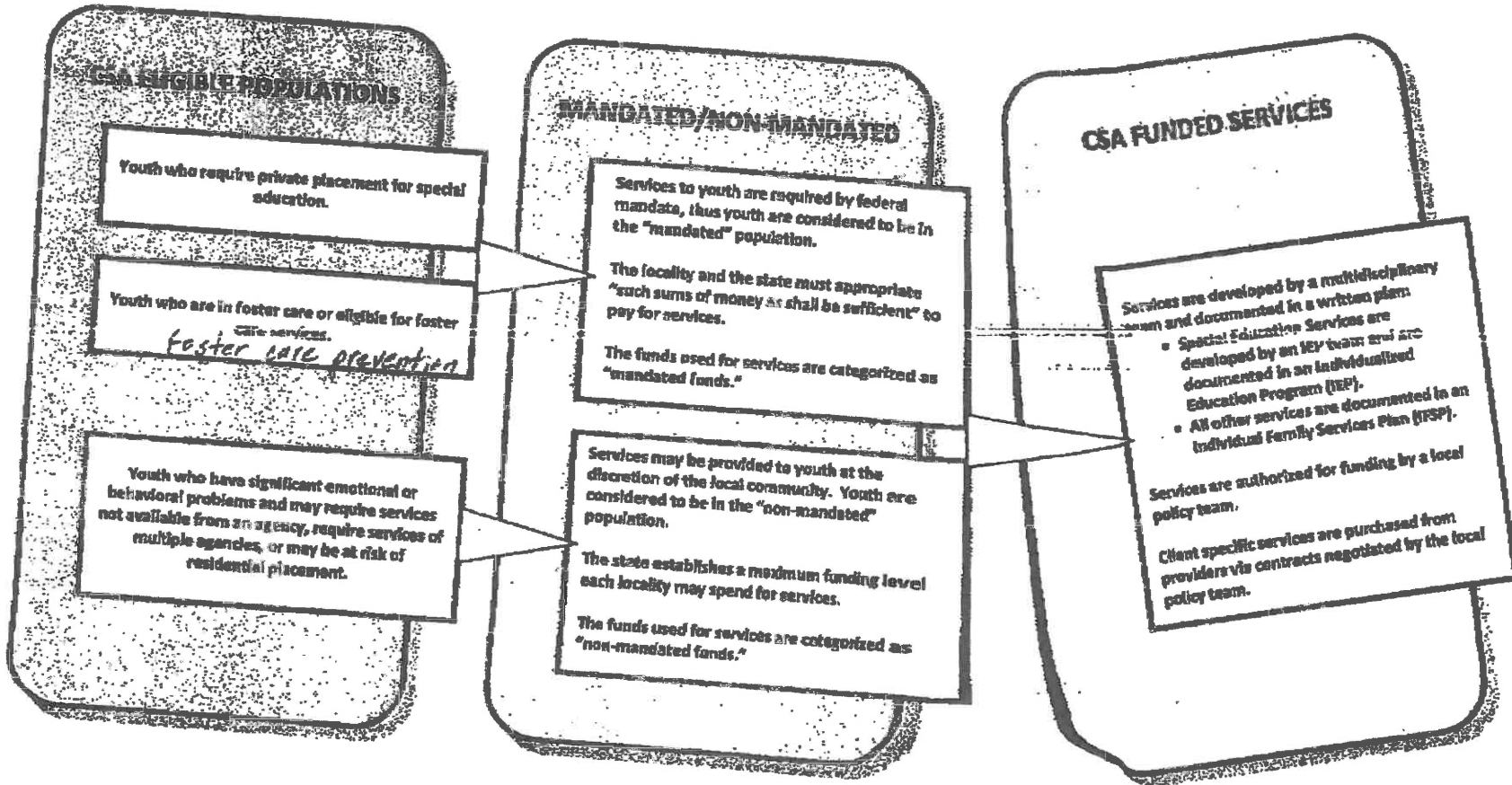
Coordinated services

Effective individualized care planning and management processes address the unique strengths and needs of children and families holistically, value and respect family and youth input, deliver care in the family setting, and care for families in the context of their communities.

FUND STREAMS AVAILABLE TO LOCAL GOVERNMENTS FOR CHILD-SPECIFIC PURCHASED SERVICES

| FUND NAME | MADE AVAILABLE TO <i>Process for Access</i> | POPULATION SERVED | POTENTIAL SERVICES |
|---|---|---|---|
| State Pool Funds <i>Comprehensive Services Act</i> | Community Policy and Management Teams <i>Annual allocations; expenditures reimbursed.</i> | <ul style="list-style-type: none"> Youth who require foster care services or services to prevent foster care; up to age 18. Youth who require private school placement for purposes of special education; through age 22. Youth with behavioral health issues requiring services of more than one agency and/or are at-risk of out-of-home placement; to age 18. | <ul style="list-style-type: none"> Full array of services as needed to meet the individual needs of youth and their families. Independent Living services for youth who exited foster care at age 18; up to age 21. |
| Title IV-E Foster Care | Eligible clients for eligible costs <i>Expenditures reimbursed to LDSS</i> | <ul style="list-style-type: none"> Eligible youth in foster care; up to age 19. | <ul style="list-style-type: none"> Maintenance costs related to foster care. |
| Promoting Safe and Stable Families | Local Department of Social Services <i>Local application approved by CPMT submitted to VDSS every five years; updated annually.</i> | <ul style="list-style-type: none"> Families with children at risk of foster care. Families within 15 months of a child's entry into foster care. | Local PSSF plan identifies specific services: <ul style="list-style-type: none"> Family preservation services. Family support services. Time-limited reunification services. |
| Chafee Independent Living Services Fund | Local Department of Social Services <i>Annual funding application.</i> | <ul style="list-style-type: none"> Youth in foster care; ages 14-21. Youth adopted from foster care; ages 14-21. | <ul style="list-style-type: none"> Services to enhance independent living skills (e.g., money management, household maintenance, etc.). |
| Chafee Education and Training Vouchers | Local Department of Social Services <i>Funds allocated according to number of eligible youth.</i> | <ul style="list-style-type: none"> Youth in foster care who have completed secondary education. Youth adopted from foster care at or after the age of 16. | <ul style="list-style-type: none"> Post-secondary education and vocational training (in Virginia schools). |
| Adoption Assistance | Eligible clients for eligible costs <i>Assistance agreement negotiated at time of adoption; revised as needed. Residential treatment requires FAPT approval.</i> | <ul style="list-style-type: none"> Youth with special needs adopted from foster care. | <ul style="list-style-type: none"> Community-based services and residential treatment services. May not be used for group home placement. Funds cover residential treatment placement costs not covered by Medicaid (including education). |
| Medicaid | Eligible clients for covered services. <i>Some services require prior authorization and re-authorization.</i> | <ul style="list-style-type: none"> Eligible clients. | <ul style="list-style-type: none"> Community-based behavioral health services. Residential treatment services. |
| Mental Health Initiative | Community Services Boards <i>Youth identified and assessed through FAPT and CPMT.</i> | <ul style="list-style-type: none"> Children and adolescents with serious emotional disturbance who are not mandated under the CSA; must be under the age of 18 at the time services are initiated. | <ul style="list-style-type: none"> Community-based mental health and substance abuse services. |
| Virginia Juvenile Community Crime Control Act | Court Services Unit <i>Local plan submitted every two years to Board of Juvenile Justice. Funds may be used for programs as well as child-specific services.</i> | <ul style="list-style-type: none"> Youth before CSU or court for delinquent or status offense; up to age 21. | <ul style="list-style-type: none"> Community-based services per local plan. |
| Transitional Services Fund (294) | Court Services Unit <i>Youth-specific services approved for funding by DJJ.</i> | <ul style="list-style-type: none"> Youth released from DJJ commitment and on parole; up to age 21. | <ul style="list-style-type: none"> Non-residential services. |

UNDERSTANDING THE COMPREHENSIVE SERVICES ACT (CSA)



For more information contact: Office of Comprehensive Services phone: (804) 662-9816; web: <http://www.csa.virginia.gov/>

January 2012